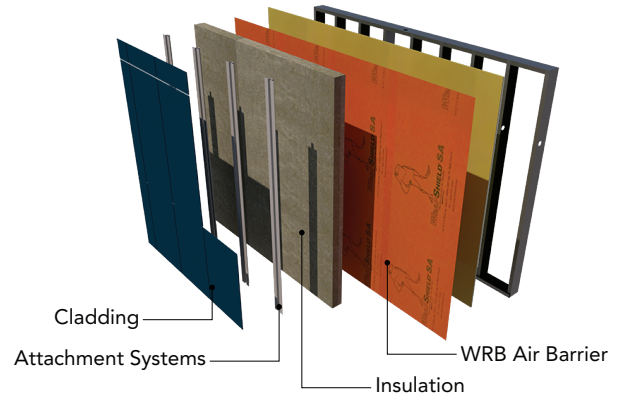


BUILDING ENCLOSURE: MANAGING RISK AND OPTIMIZING PERFORMANCE

November 4, 2025, 3:15 pm - 4:30 pm

Zephyr Room, Renaissance Minneapolis Hotel | The Depot

This course features a panel of **four different industry** experts, who will review the complexities and design trade-offs required to build a robust, **dependable, cost effective, building façade.**



Presenter Panel:



Drew Clausen



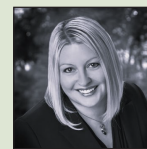
Geoff Duck

CASCADIA
WINDOWS & DOORS



Mike Herbst

ENVIRONMENTAL BUILDING PRODUCTS
EBP



Michelle Murray

LB Lerch Bates
BUILDING INSIGHT

Course Objectives:

Course CC-ED-15, 1 LU

- Understand the complexity of design trade-off's to build a robust building facade.
- Ensure NFPA 285 and energy code compliance without compromising building performance.
- Identify the challenges of choosing and placing an air and weather barrier to reduce the risk of moisture damage.
- Discuss codes, thermal bridging, and effective R-value challenges as they relate to choosing thermal spacers.
- Understand the requirements associated rainscreen cladding materials such as: finish, performance, product safety and combustible/non-combustible.

Join us!



Minnesota Conference on Architecture
November 3-5, 2025
Renaissance Minneapolis Hotel | The Depot

Learn more and register today!
www.aia-mn.org/events/conference



LIVE! November 4, 2025, 3:15 pm - 4:30 pm